



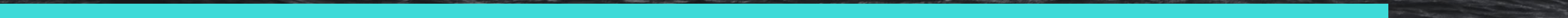
CLASS ASSOCIATION

# ONE DESIGN CIRCUIT

THE OPPORTUNITY TO FLY



INFORMATION PACK





One design

THE NEW NORMAL



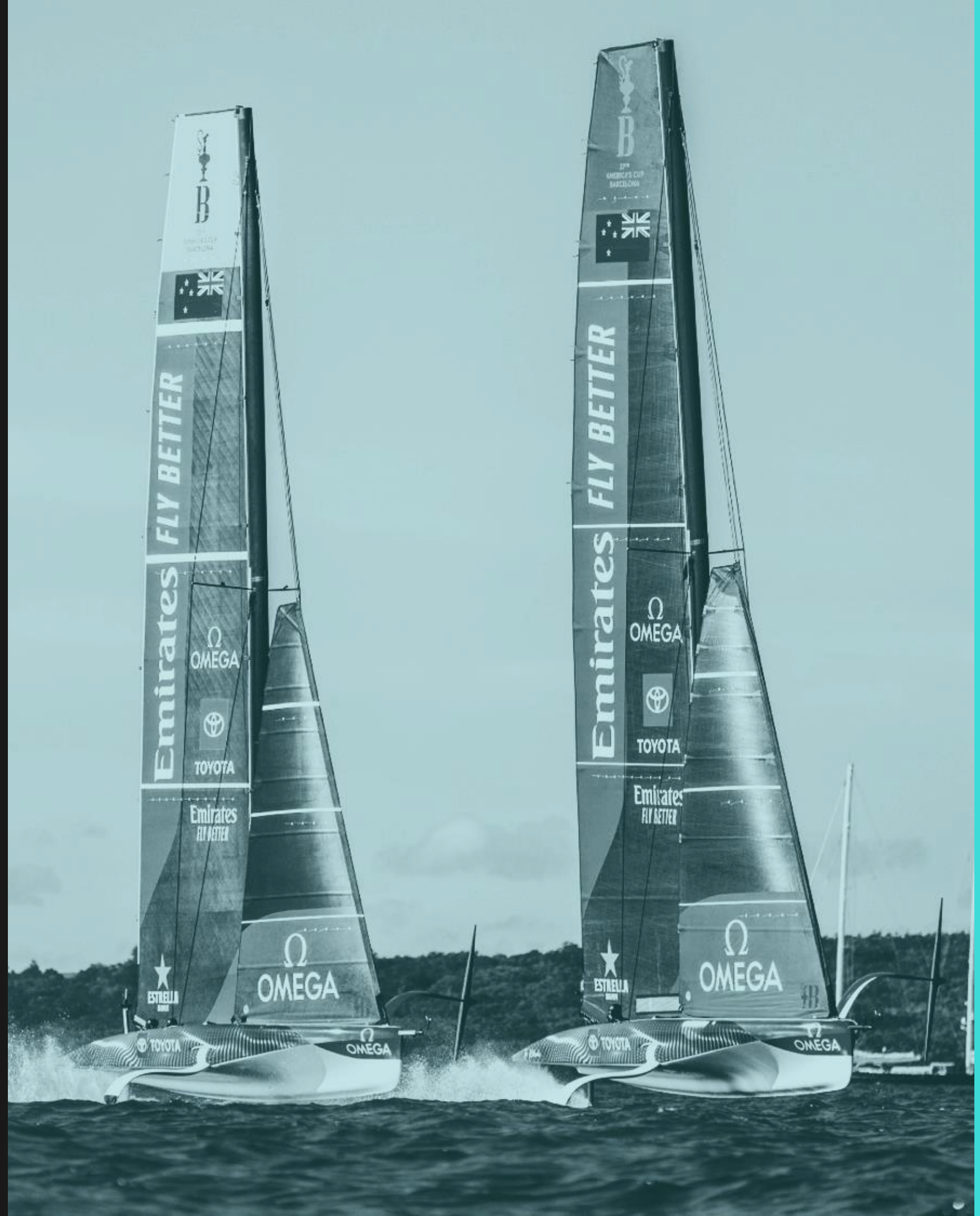
The AC40 One Design Class is a new and thrilling One Design class setup to maximise the opportunities presented to our sport since the design and build of the AC40 from McConaghy Boats and Emirates Team New Zealand.

Never before in our sport have **private owners** and **professional sports** teams been direct beneficiaries of current Americas Cup technology, therefore the new AC40 One Design Circuit, is expected to be the new benchmark in high performance, One Design racing.

# AC40

## OD-CIRCUIT

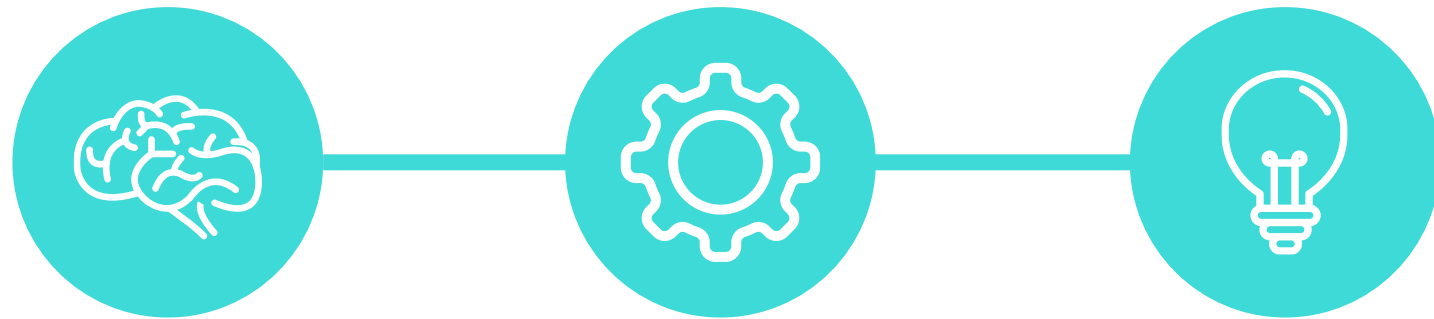
1. AC40 Yacht specification overview
2. Projected event schedule and format
3. Maintenance and shared services operations
4. One Design Rule overview
5. Circuit costing and commercial opportunities
6. Class objective and by-laws



INFORMATION PACK BREAKDOWN



## The Yacht Overview



1

Designed by Emirates  
Team New Zealand

2

Built by McConaghy

3

One Design Class

- The most exciting One Design Class ever created, where technology and sailing meet.
- A chance to create something special with an elite pool of owners and sailors, racing incredible machines at beautiful locations around the Globe.
- Shared resources off the water and data sharing on the water, ensures a level playing field for all new teams.
- The opportunity to fight toe-to-toe against the Worlds best sailors on a platform where technology assists you in all the right areas.

Automated ETNZ control unit  
supplied to give constant auto-  
pilot foiling.



MAST HEIGHT 18 M

CREW 4 SAILORS

2 HELMS & 2 TRIMMERS

WEIGHT 2 T

TOP SPEED 45+ KN

HULL 11.3 M





AC40 How to...



[YOUTUBE SOURCE](#)  
[ANCASTAININTERNATIONAL BOAT SALES](#)

# Event FORMAT

2024 will see the creation of a training base in the Mediterranean for new AC40 Teams to join and get up to speed fast, before the first official event in Q2 2025.

The 5-event circuit will consist of 4 days racing with two practice days, one being compulsory, where start line practice will be a priority.



## Setup



AC40 teams will have access to event locations 5 days prior to first sailing to work on preparing the yachts, in conjunction with the AC40SS (Shared Services), whereby tow tests are carried out for pilot calibration.

## Pre-race



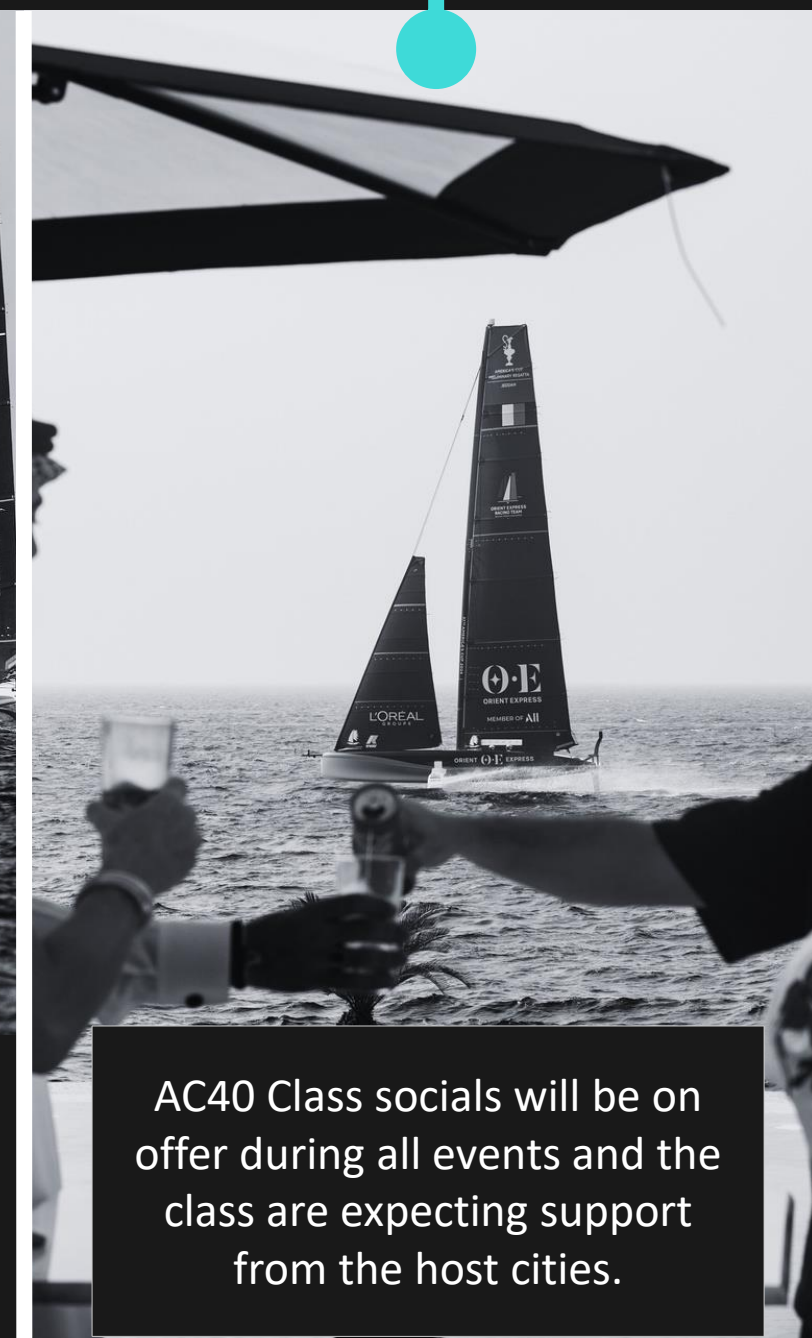
Class run practice days will be held at each event with a focus on start line procedure and refinement of both yacht and race management software.

## Racing



4 x fleet races a day will be held with target race lengths of 30-45 minutes. On-water-umpires will control racing on a windward-leeward style race course, but PRO's will vary the orientation of leg 1 during the event to offer variety.

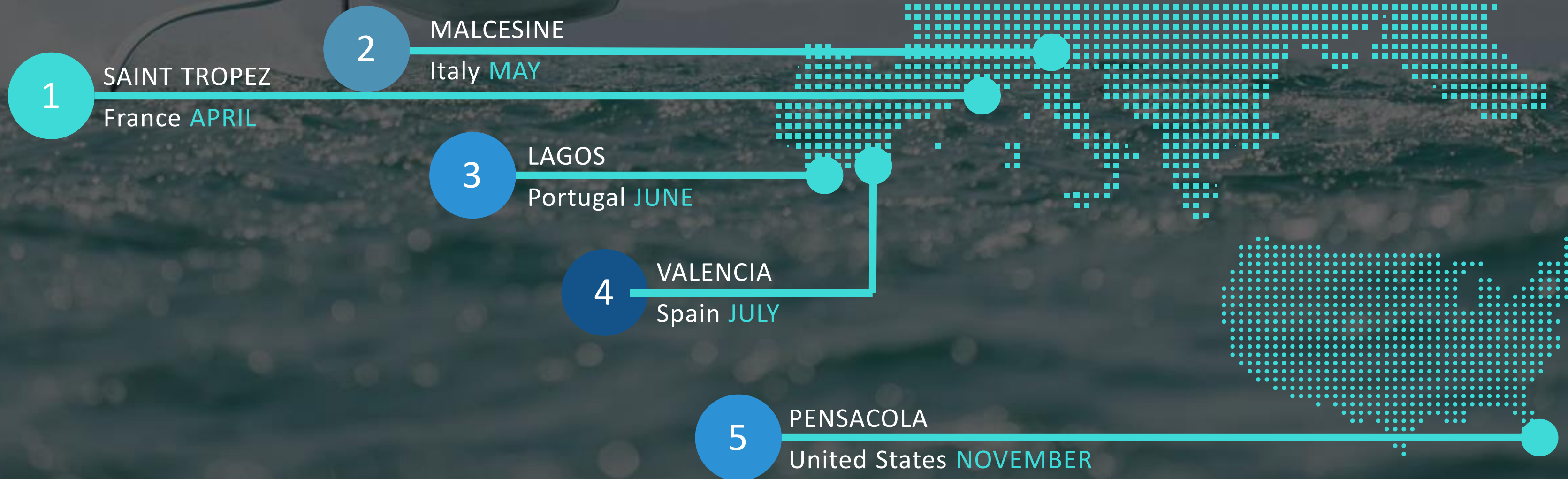
## Social



AC40 Class socials will be on offer during all events and the class are expecting support from the host cities.

# 2025 CALENDAR

The Series





## Maintenance and AC40SS SHARED SERVICES



Recognising the technical attributes of the AC40, the Class is offering a **Shared Services** platform to help teams and owners manage their yachts **as much, or as little** as required.

The AC40SS team will have logistic, hydraulic, electronic, composite and mechatronic experts on hand during all events to assist teams with any technical issues.

This team will also oversee the event logistics and transportation that will allow the Class to make economies of scale for owners buying into the package.

This will also include a centralised reserve of spares.

The AC40 Shared Services costs will be dependent on the volume of owners that commit to this service.





## Maintenance and AC40SS SHARED SERVICES



### Running an AC40

- We expect owners to have their own shore and on-water team, est. 5/6 pple in addition to sailors.
  - Rib driver/coach
  - Boat builder/hydraulic
  - Electrical engineer
  - Sail maker/Safety officer
  - Logistics/management
- Hardware required
  - 1 x Chase boat, Protector 330 Chase style.
  - 1 x 40ft storage and sails container
  - 1 x flat rack container (supplied with yacht)
- AC40SS team to assist during setup days with any technical issues, as well as carrying key, smaller, spare components. AC40SS to carry out systems check prior to all events.
- A fee of 100,000 Euros (pending final approval from Class Association) will be paid to the AC40SS at the start of the season with pro rata billing for services and basic spare parts used. (Optional)
- A separate fee of 150,000 Euros (pending final approval from Class Association) will be paid to AC40SS to cover all shipping, boat movement and storage costs during the event season. (Required)

# AC40 One Design Rules

AFF

ADIER



L'OP  
GR



## SNAPSHOT

- AC40 OD Class Regattas are open to private owner-driver teams and professional sports teams, subject to limitations below.

Every participating yacht shall have a max quota of two Americas Cup sailors on board, where an AC sailor is defined as any person that sailed for an AC team on an AC40 or AC75 Class Yacht in a race (Including pre-lim regattas) during the 36<sup>th</sup> or 37<sup>th</sup> AC campaigns.

- For any owner-driver team whose owner competitively races or trains for less than 50 days PA, the quote is raised to three AC sailors for their first year of ownership.
- The AC40 Class Rule is administered by ETNZ and in order to prevent divergence of the fleet, the AC40CA and ETNZ intends that the AC40 Rule will remain common across all AC40's wherever they are competing.
- No hardware upgrades within first 24 months of competition unless mutually agreed by all owners or for safety benefits.
- Performance data from ETNZ shared with ALL new owners to ensure maximum performance progress in year 1 and 2.
- All teams are required to hold an AC40 sailors permit whereby a minimum time in simulator is required as well as the completion of a capsized safety drill.

# AC40 One Design Rules



## SNAPSHOT

- Crew, carried equipment and crew supplied media equipment shall not exceed 380kg. Owner/driver has a nominal weight of 85kg.
- Sail inventories comprise of 5 sails - 2 x mainsail skins and 3 x headsails. No sail limitations in year one. 7 sail buttons PA thereafter.
- All software updates will be distributed by the Class Measurer and any deviation or interference with the supplied coding will be strictly prohibited.
- The AC40 will appoint a class measurer who in consultation with the race officials will dictate performance limits for the yachts for the given weather and sea state conditions of that day. For example, a ride-height limit.
- For yachts to be eligible to race, they must conform to the AC40 Specification, which reflects the yacht originally supplied from manufacturers.
- The total sailing weight of yacht and crew shall be between 2479-2486 kg. The platform and mast shall be weighed in their respective measurement conditions once PA to obtain AC40OD measurement certification.
- Onboard communication equipment will be supplied by the AC40CA to each crew to allow for onboard communications, but also connection with the Race Authority.
- The AC40CA will supply standard navigation software for each yacht to indicate boundary limits of the race area, as well as start line approaches.

# Circuit costings

## We are in control

With uptake in the class reaching expected levels, the AC40 Class will have both private and commercial pull, attracting experienced racers and professional race teams, which is already giving the AC40 power to negotiate with host cities. It is the AC40CA's target to secure host cities FOC, such will be the global appeal of the AC40 Circuit In 2025.

### Anticipated annual circuit costings for consideration:

#### Class Management fees – €180k PA

To include: Class manager, Secretary, Measurer, Treasurer, Communications, Social Media, Promotion.

#### Events – €1.5m PA

To include: Media, Safety, Hospitality, Socials, Race Management, Logistics, Boat yard services.

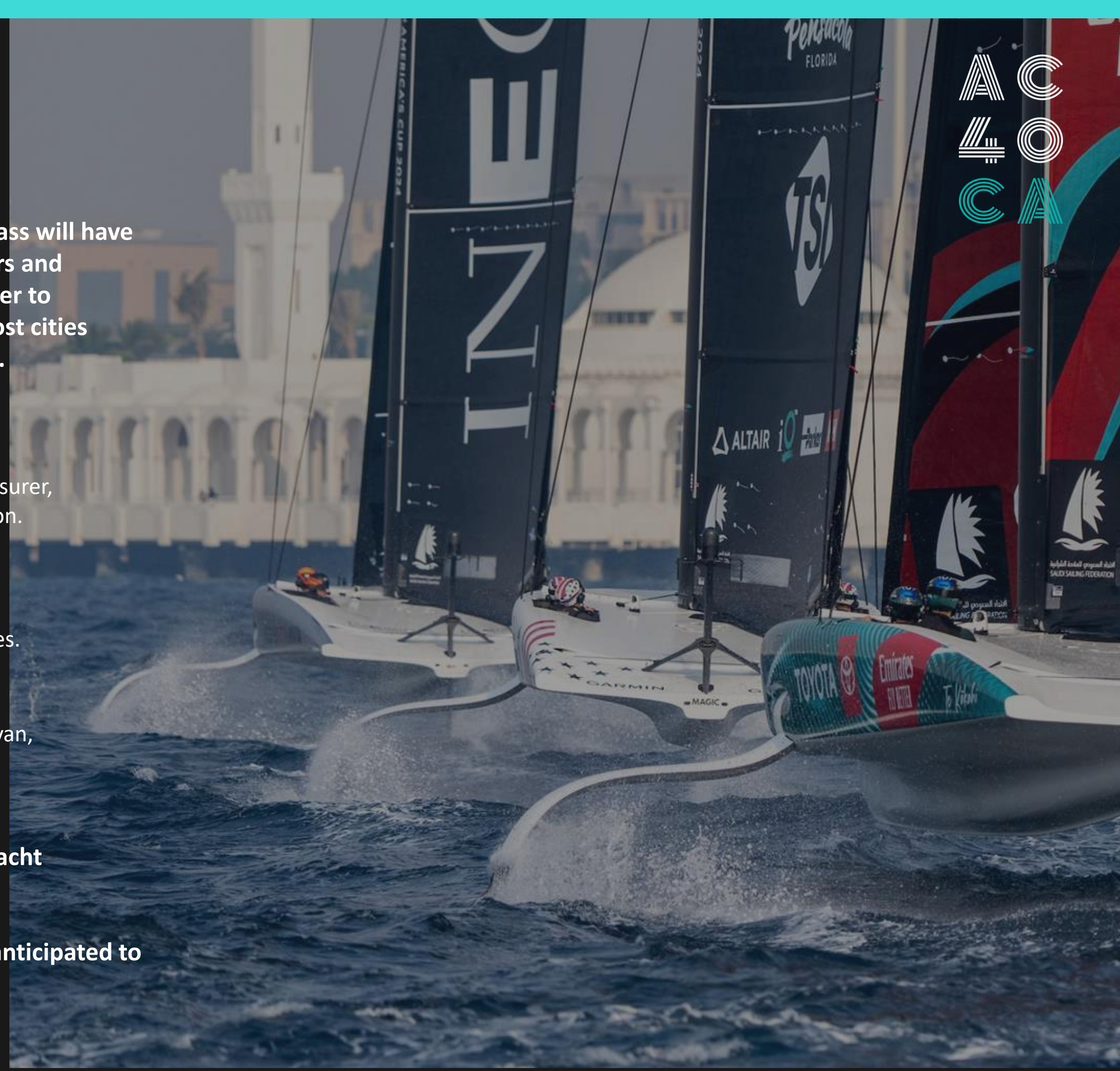
#### Class assets – €200k PA (5yr amortized)

To include: Simulator, Safety rib, marks, containers, van, spare parts, race village.

Estimated annual class cost in region of €1.78m euros.

Shared by 6 teams: €300k PA circuit costs, which includes all yacht maintenance, logistics and events with AC40SS.

End of year, 5 event budget, including yacht and sailing team anticipated to be in the region of €700-900k.



# Visual exposure



SAILS  
Sponsor's Space



HULL  
Sponsor's Space



SPONSORS VISIBILITY

# Class Objectives and by-laws



## SNAPSHOT

- The AC40 Class Association will be registered in Switzerland (TBC) and may also establish a commercial entity to manage commercial rights.
- Circuit managed by AC40 Class Association, comprising of:
  - 3 members of the AC40 Class council (owners)
  - 1 member of McConaghy Boats
  - 1 member of ETNZ
  - The Class Association Manager
- AC40 Class Association membership is offered to the owners of any AC40 Yacht and will entitle members to use the AC40SS, take part in Class Association organised training and enter AC40 CA regattas.
- The role of the AC40CA committee shall be to organise regatta schedules, appoint staff to run the AC40SS, training and regattas, liaise with ETNZ on matters relating to the AC40 Class Rule and appoint the AC40 Class Manager.
- Costs of the AC40CA will be met by its members, with the AC40CA also able to seek commercial support/sponsorship if approved by the board. No ongoing license or rule management fee will be due to ETNZ or McConaghy Boats.
- The AC40 Class Rule will not be modified in any way that makes significant changes to the equipment or parts required on yachts competing in the AC40 Circuit, except if required for safety reasons or mutually agreed by all parties.

A C 470

CLASS ASSOCIATION

# ONE DESIGN CIRCUIT

THE OPPORTUNITY TO FLY



INFORMATION PACK

McCONAGHY

